



VOYAGE TO THE DEEP

EXHIBITION OVERVIEW

**MU
SEA
UM**
AUSTRALIAN NATIONAL
MARITIME MUSEUM


FLYING FISH



RELEASE YOUR INNER AQUANAUT!

Based on French author Jules Verne's 1870 classic *20,000 Leagues Under the Sea*, the exhibition brings to life the deep-sea adventures of Captain Nemo, his fantastical Nautilus submarine and the mythical world he inhabited.

At the center of this fantastic world is the giant *Nautilus*. Kids can climb aboard, discover the inner workings of a deep-sea submersible, take up the controls, peer through the periscopes, crank the propeller, test out the bunks and explore Captain Nemo's Cabinet of Curiosities full of wonderful marine specimens. Don't forget to play the bubbly pipe organ and discover the galley of strange foods!

Then slip on a dive suit and venture through the world below the waves to explore the lost world of Atlantis. Visit the octopus' garden with its massive clam shell, slide down the escape hatch, then wander through the seaweed maze in the kelp forest.



TOPIC AREAS

This exhibition is designed for ages 2-10 and presents a variety of topics through interactives, graphics and props.

Topics explored include:

- Marine habitats & creatures
- Marine biology research techniques
- Periscopes
- How submarines are steered and powered
- How submarines dive & surface-ballast tanks
- Diving equipment
- Maritime archaeology

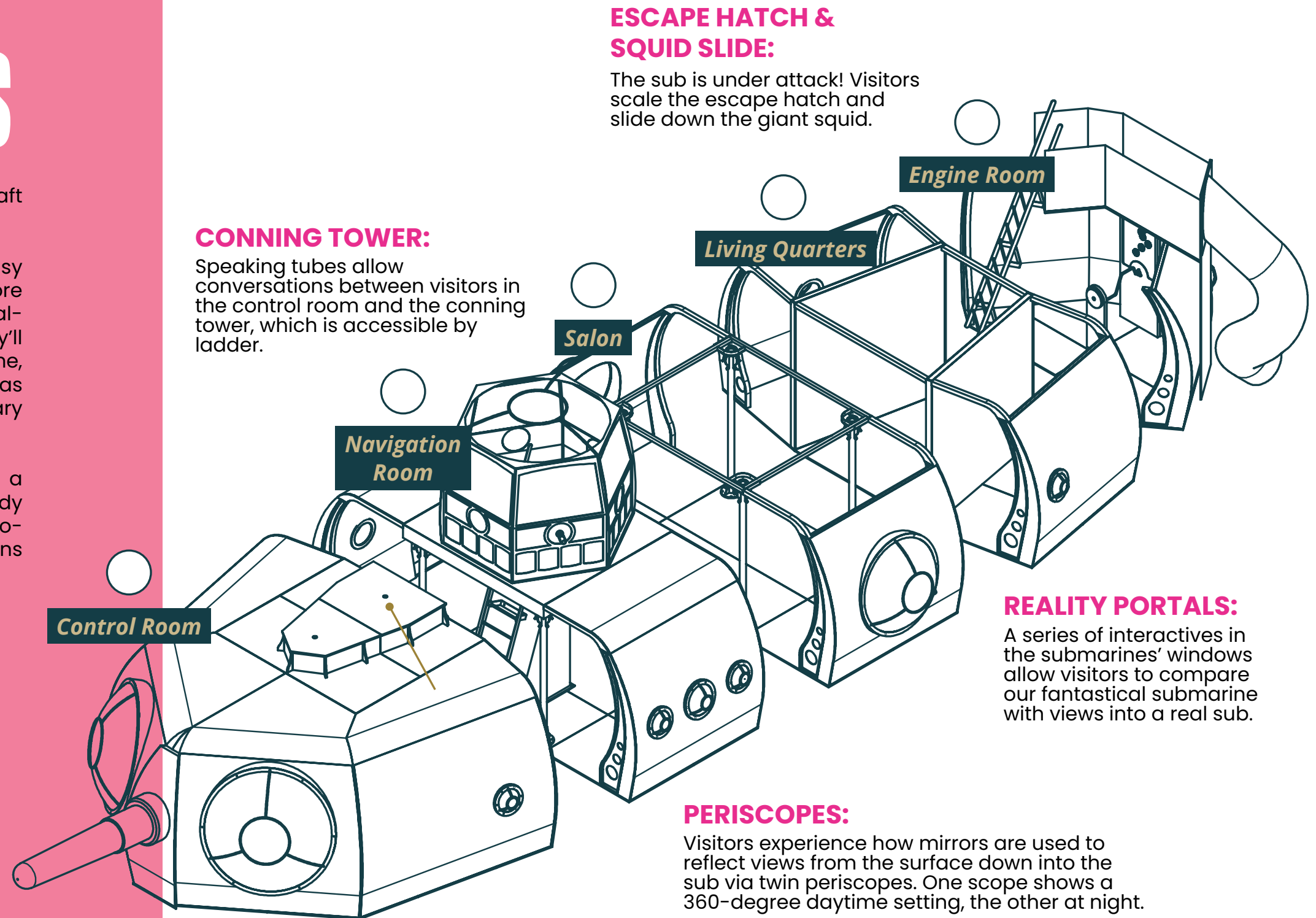


THE NAUTILUS

Verne's submarine was a fantastical craft with a basis in genuine technologies.

The exhibition presents both the fantasy and the facts, allowing visitors to explore both Verne's imaginary world and the real-life wonders of ocean exploration. They'll discover what it is to operate a submarine, and learn about the underwater world as it would be seen from inside an imaginary deep-sea exploration vessel.

The exhibition is designed to provide a range of interactive experiences: Full-body interactions, mechanical and electro-mechanical exhibits, interactive projections and touchscreens.



ESCAPE HATCH & SQUID SLIDE:

The sub is under attack! Visitors scale the escape hatch and slide down the giant squid.

CONNING TOWER:

Speaking tubes allow conversations between visitors in the control room and the conning tower, which is accessible by ladder.

Control Room

Navigation Room

Salon

Living Quarters

Engine Room

REALITY PORTALS:

A series of interactives in the submarines' windows allow visitors to compare our fantastical submarine with views into a real sub.

PERISCOPES:

Visitors experience how mirrors are used to reflect views from the surface down into the sub via twin periscopes. One scope shows a 360-degree daytime setting, the other at night.



NAUTILUS COMPONENTS

CONTROL ROOM

- Speaking tubes
- Seabed maze
- Dress-ups
- Dive boots
- Sea sounds
- Conning tower

SALON

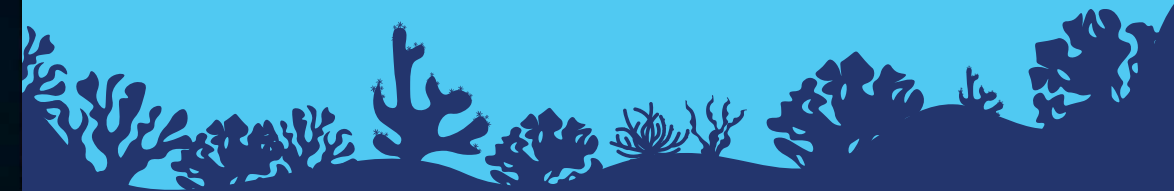
- Magnifier
- Viewing window
- Mechanical grabbers
- Cabinet of curiosities
- Pipe organ

LIVING QUARTERS

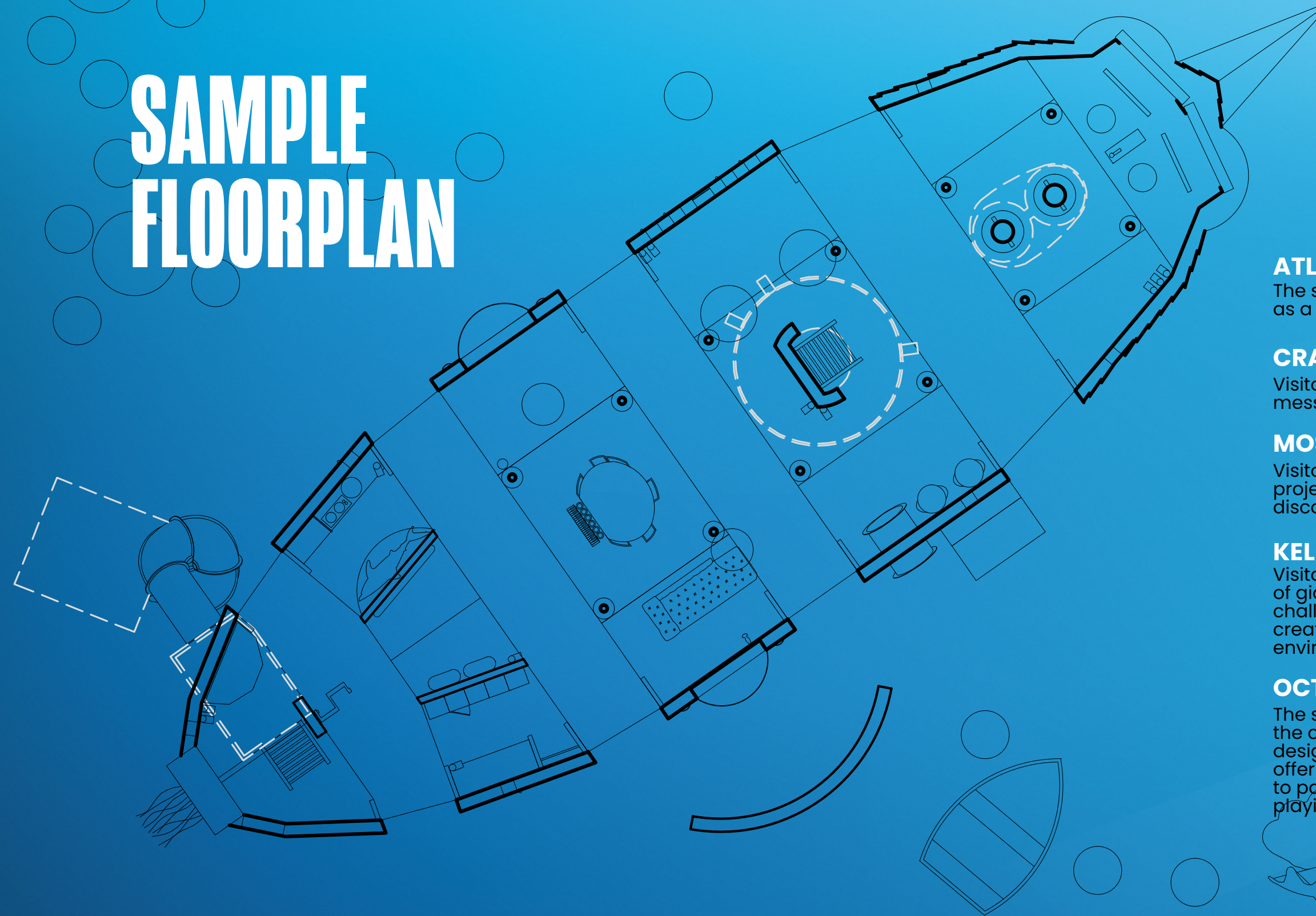
- Shark guts
- Galley
- Ballast Tanks
- Bunks and Lockers
- Could you be a submariner?
- Narwhal height chart

ENGINE ROOM

- Connect the Batteries
- Crank the Prop
- Escape hatch & squid slide
- Speaking Tube



SAMPLE FLOORPLAN



ATLANTIS:

The sunken city can be used as a performance stage.

CRACK THE CODE:

Visitors can try to decipher the message in an ancient alphabet.

MOSAIC PROJECTION:

Visitors use this interactive projection to clear the sand and discover hidden mosaics.

KELP FOREST:

Visitors can explore a forest of giant kelp, where they are challenged with finding various creatures inhabiting this environment.

OCTOPUS GARDEN:

The submarine's dinghy is the centerpiece of an area designed for younger visitors, offering them the opportunity to participate in active role-playing activities.

ADDITIONAL COMPONENTS

VORTEX:

In the final scene of “20,000 Leagues Under the Sea,” the Nautilus vanishes into a powerful whirlpool. Visitors can then engage with this interactive vortex to test if they can submerge a model submarine.

ADULT TRAIL:

Adult visitors can use a trail booklet to discover fascinating and more in-depth information about the topics covered. They can share this knowledge with younger visitors either while in the exhibition, or later, to prolong the experience.

Voyage to the Deep is relevant to a school curriculum—with strong links to the science syllabus via the built environment (the built elements of the submarine and how things work) and the natural environment (life cycles and the environment).

This turn-key exhibition offers a wide range of experiences, from full-body activities, to simple table-top activities and text panels. There is no set path through the exhibition; visitors can find their own way, according to their age and interests.



**MU
SEA
UM**

AUSTRALIAN NATIONAL
MARITIME MUSEUM

The Australian National Maritime Museum is Australia's national centre for maritime collections, exhibitions, research and archaeology.

The museum presents a changing program of stimulating exhibitions and events to share Australia's maritime history and connect the stories, objects, people and places that are part of our country's narrative. We welcome over 850,000 visitors annually including families, interstate and international tourists.

Connecting with audiences outside of Sydney, interstate and across regional Australia is a big part of what we do. Our diverse touring exhibitions give regional communities the chance to view and learn more about the fascinating stories behind the National Maritime Collection.

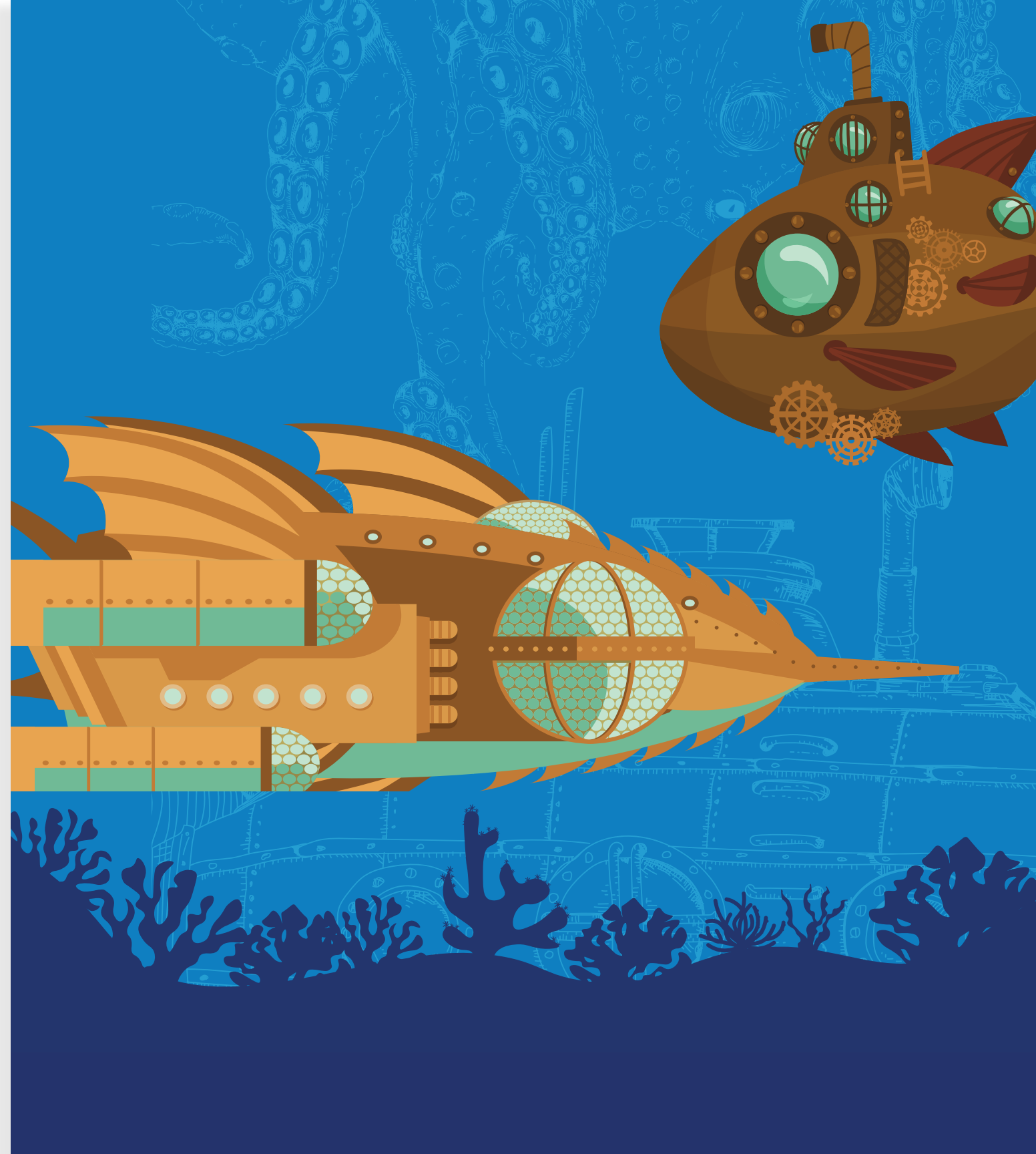
sea.museum



FLYING FISH

A leading creator of traveling exhibitions, Flying Fish collaborates with top museums and science centers to produce extraordinary and influential experiences. Flying Fish exhibitions have impacted millions of visitors, from Melbourne to New York, generating sustainable income for their clients and inspiring fans worldwide.

For Museums. By Museums.
flyingfishexhibits.com



SPECS

SPACE REQUIRED:
4,000–6,000 sq. ft.

TARGET AUDIENCE:
Families with children, school groups

MINIMUM CEILING HEIGHT:
12 ft., 16 ft. for the optional conning tower

PRODUCTION TIME:
Seven (7) working days for installation;
five (5) for deinstallation

BOOKING

October 2024 – January 2025
June 2025 and beyond
Inquire for availability

CONTACT

+1.651.207.8877
jayb@flyingfishexhibits.com
joanie@flyingfishexhibits.com
flyingfishexhibits.com

Voyage to the Deep - Underwater Adventures is
produced by Australian National Maritime Museum
and toured internationally by Flying Fish.

